

Digital Micro-Ohmmeters



FEATURES

- ▶ Selectable test currents from 10mA to 200A (model dependent)
- ▶ Resolutions to 0.1 micro-ohm
- ▶ Accuracies to 0.05%
- ▶ Large easy to read backlit display
- ▶ Automatic and software temperature compensation (model dependent)
- ▶ Automatic multipoint measurements
- ▶ Internal data storage of test results
- ▶ Analysis and report generation software (DataView®) included
- ▶ Built into a rugged field proven case
- ▶ Kelvin test cables included

Our products are backed by over 100 years of experience in test and measurement equipment, and encompass the latest international standards for quality and safety.

Technical Hotline: (800) 343-1391
www.aemc.com

 **AEMC**[®]
INSTRUMENTS
CHAUVIN ARNOUX GROUP

MODEL 6240



FEATURES

- ▶ Reliable low resistance measurements
- ▶ Four-terminal Kelvin resistance measurement eliminates test lead resistance
- ▶ Measures up to $4000\mu\Omega$ with 10A of test current
- ▶ 0.25% basic accuracy
- ▶ $1\mu\Omega$ resolution
- ▶ Direct reading, easy to operate
- ▶ Test current selection of 1mA, 10mA, 100mA, 1A and 10A
- ▶ Polarity reversal button
- ▶ Overload and input fuse protection
- ▶ Manufactured to international safety and environmental standards
- ▶ Automatic scaling and zeroing
- ▶ Large terminals accept banana plugs and spade lugs
- ▶ Rechargeable NiMH battery with internal charger (110/230V)
- ▶ Rugged, double insulated watertight case
- ▶ Includes DataView® software for instrument configuration, data storage, analysis and report generation

Product 2129.80 Includes

- 2 Kelvin clips, 10ft (10A - Hippo)
- 2 Kelvin Probes 10ft (1A, spring loaded)
- NiMH rechargeable battery pack
- Optical USB cable
- US 115V power cord
- DataView® software
- Extra large tool bag
- 2 spare fuses (12.5A)
- User manual

Accessories/Replacement Parts


- 1017.84 Kelvin Clips 10ft (10A - Hippo)
- 2118.70 Kelvin Clips 20ft (10A - Hippo)
- 2118.73 Kelvin Probes 10ft (1A, spring loaded)
- 2118.74 Kelvin Probes 20ft (1A, spring loaded)
- 2118.75 2 Kelvin Probes Pistol Grip 10ft (10A - spring loaded)
- 2118.76 2 Kelvin Probes Pistol Grip 20ft (10A - spring loaded)
- 2118.77 2 Kelvin Probes 10ft (10A - spring loaded)
- 2118.78 2 Kelvin Probes 20ft (10A - spring loaded)
- 2118.79 Kelvin Clips 10ft (1-10A)
- 2118.80 Kelvin Clips 20ft (1-10A)

APPLICATIONS

- ▶ Aerospace metallic coating resistance measurement
- ▶ Bonding verification on earth/ground systems
- ▶ Weld joint integrity verification
- ▶ Contact resistance measurement of breakers and switchgear
- ▶ Aircraft and rail bonding checks
- ▶ Wire to terminal connections and resistance checks
- ▶ Battery strap resistance checks
- ▶ Cable joint and bus bar connection checks
- ▶ Mechanical bond tests



SPECIFICATIONS

ELECTRICAL						
Range	4000 $\mu\Omega$	40m Ω	400m Ω	4000m Ω	40 Ω	400 Ω
Accuracy	0.25% of Reading \pm 2cts	0.25% of Reading \pm 2cts	0.25% of Reading \pm 2cts	0.25% of Reading \pm 2cts	0.25% of Reading \pm 2cts	0.25% of Reading \pm 2cts
Resolution	1 $\mu\Omega$	10 $\mu\Omega$	0.1m Ω	1m Ω	10m Ω	100m Ω
Test Current	10A	1A	1A	100mA	10mA	10mA
Measurement Mode	Single test start/stop or auto test and store of multiple measurements					
Power Source	Rechargeable 6V, 8.5Ah NiMH batteries					
Battery Life	Up to 850, 10A tests					
Battery Charging	Internal 110/230Vac, 50/60Hz charger					
Power Management	User selectable power save mode					
Low Battery Indication	 blinks when battery needs charging					
Memory	Stores up to 99 test results Data in memory can be reviewed on the instrument display, on a PC or via direct printout					
Communication Software	DataView [®] software					
MECHANICAL						
Dimensions	10.70 x 9.76 x 7.17" (270 x 250 x 180mm)					
Weight	10 lbs. (4.5kg)					
Index of Protection	IP53 (case open); IP54 (case closed)					
Color	Safety yellow case; gray faceplate UL94 V-0					
DISPLAY						
Display Type	4000-count LCD					
Size	4 x 2.25" (102 x 57mm)					
Backlight	Blue electroluminescent					
COMMUNICATION						
Interface Port	Optically isolated USB					
ENVIRONMENTAL						
Operating Temperature	14° to 132°F (-10° to 55°C); 10 to 85% RH					
Storage Temperature	-40° to +158°F (-40° to +70°C); 10 to 90% RH					
SAFETY						
Safety Rating	EN61010-1 300V CAT II					
Double Insulation	Yes					
CE Mark	Yes					
Catalog No.	2129.80					



1017.84 (10ft)
2118.70 (20ft)



2118.73 (10ft)
2118.74 (20ft)



2118.75
2118.76



2118.77
2118.78



2118.79 (10ft)
2118.80 (20ft)

MODEL 6255



Product 2129.84 Includes

- 2 Kelvin clips 10ft (10A - Hippo)
- 2 Kelvin Probes 10ft (1A, spring loaded)
- NiMH rechargeable 6V battery pack
- Optical USB cable
- US 115V power cord
- DataView® software
- Extra large tool bag
- User manual

Accessories/Replacement Parts

- 1017.84 Kelvin Clips 10ft (10A - Hippo)
- 2118.70 Kelvin Clips 20ft (10A - Hippo)
- 2118.73 Kelvin Probes 10ft (1A, spring loaded)
- 2118.74 Kelvin Probes 20ft (1A, spring loaded)
- 2118.75 2 Kelvin Probes Pistol Grip 10ft (10A - spring loaded)
- 2118.76 2 Kelvin Probes Pistol Grip 20ft (10A - spring loaded)
- 2118.77 2 Kelvin Probes 10ft (10A - spring loaded)
- 2118.78 2 Kelvin Probes 20ft (10A - spring loaded)
- 2118.79 Kelvin Clips 10ft (1-10A)
- 2118.80 Kelvin Clips 20ft (1-10A)
- 2129.95 RTD Temperature Probe
- 2129.96 RTD Temperature Probe w/ 7ft extension cable

FEATURES

- ▶ Test up to 60 minutes continuously at 10A
- ▶ Measure from $1\mu\Omega$ to 2500Ω
- ▶ Test current selection of 1mA, 10mA, 100mA, 1A and 10A
- ▶ RTD temperature probe to check tested sample (optional)
- ▶ Selectable metal types
- ▶ Automatic and manual temperature correction
- ▶ EMF levels measured and eliminated in measurement
- ▶ Two programmable alarm set points
- ▶ Stores up to 1500 test results
- ▶ Selectable Inductive or Resistive test modes
- ▶ Automatic multiple test mode (multiple tests without pressing the test button)
- ▶ Large multi-line electroluminescent display
- ▶ Local or remote test setup and control
- ▶ Internal rechargeable batteries – conduct up to 5000 10A tests
- ▶ Rugged, double insulated watertight case

APPLICATIONS

- ▶ Aerospace metallic coating resistance measurement
- ▶ Bonding resistance measurement of motors and transformers
- ▶ Bonding verification on earth/ground systems
- ▶ Weld joint integrity verification
- ▶ Contact resistance measurement of breakers and switchgear
- ▶ Aircraft and rail bonding checks
- ▶ Wire to terminal connections and resistance checks
- ▶ Battery strap resistance checks
- ▶ Cable joint and bus bar connection checks
- ▶ Mechanical bond tests



SPECIFICATIONS

ELECTRICAL							
Range	5.000mΩ	25.000mΩ	250.00mΩ	2500.0mΩ	25.000Ω	250.00Ω	2500.0Ω
Accuracy	0.15% of Reading + 1μΩ	0.05% of Reading + 3μΩ	0.05% of Reading + 30μΩ	0.05% of Reading + 0.3mΩ	0.05% of Reading + 3mΩ	0.05% of Reading + 30mΩ	0.05% of Reading + 300mΩ
Resolution	0.1μΩ	1μΩ	10μΩ	0.1mΩ	1mΩ	10mΩ	100mΩ
Test Current	10A	10A	10A	1A	100mA	10mA	1mA
Measurement Mode	Selectable: Inductive (continuous test), Resistive (instantaneous test) or Auto (multiple tests)						
Power Source	Rechargeable 6V, 8.5Ah NiMH batteries						
Battery Life	Approximately 5000, 10A tests						
Battery Charging	Internal 120/240Vac, 45/400Hz line voltage						
Power Management	Display powers down after 1, 5 or 10 minutes of inactivity (operator selectable)						
Low Battery Indication	[- +] displays when battery needs changing						
Memory	Stores up to 1500 test results Data in memory can be reviewed on the instrument display, on a PC or via direct printout						
Communication Software	DataView® software						
MECHANICAL							
Dimensions	10.63 x 9.84 x 7.09" (270 x 250 x 180mm)						
Weight	8.1 lbs (3.69kg)						
Index of Protection	IP53 (case open); IP64 (case closed)						
Color	Safety yellow case; gray faceplate UL94 V-0						
DISPLAY							
Display Type	Large 50,000-count digital						
Size	4 x 2.25" (102 x 57mm)						
Backlight	Blue electroluminescent						
COMMUNICATION							
Interface Port	RS-232						
ENVIRONMENTAL							
Operating Temperature	14° to 132°F (-10° to 55°C); 10 to 80% RH (non-condensing)						
Storage Temperature	-40° to 140°F (-40° to 60°C); 10 to 80% RH (non-condensing)						
SAFETY							
Safety Rating	EN 61010-1, 50V CAT III						
Double Insulation	Yes						
CE Mark	Yes						
Catalog No.	2129.84						



1017.84 (10ft)
2118.70 (20ft)



2118.73 (10ft)
2118.74 (20ft)



2118.75
2118.76



2118.77
2118.78



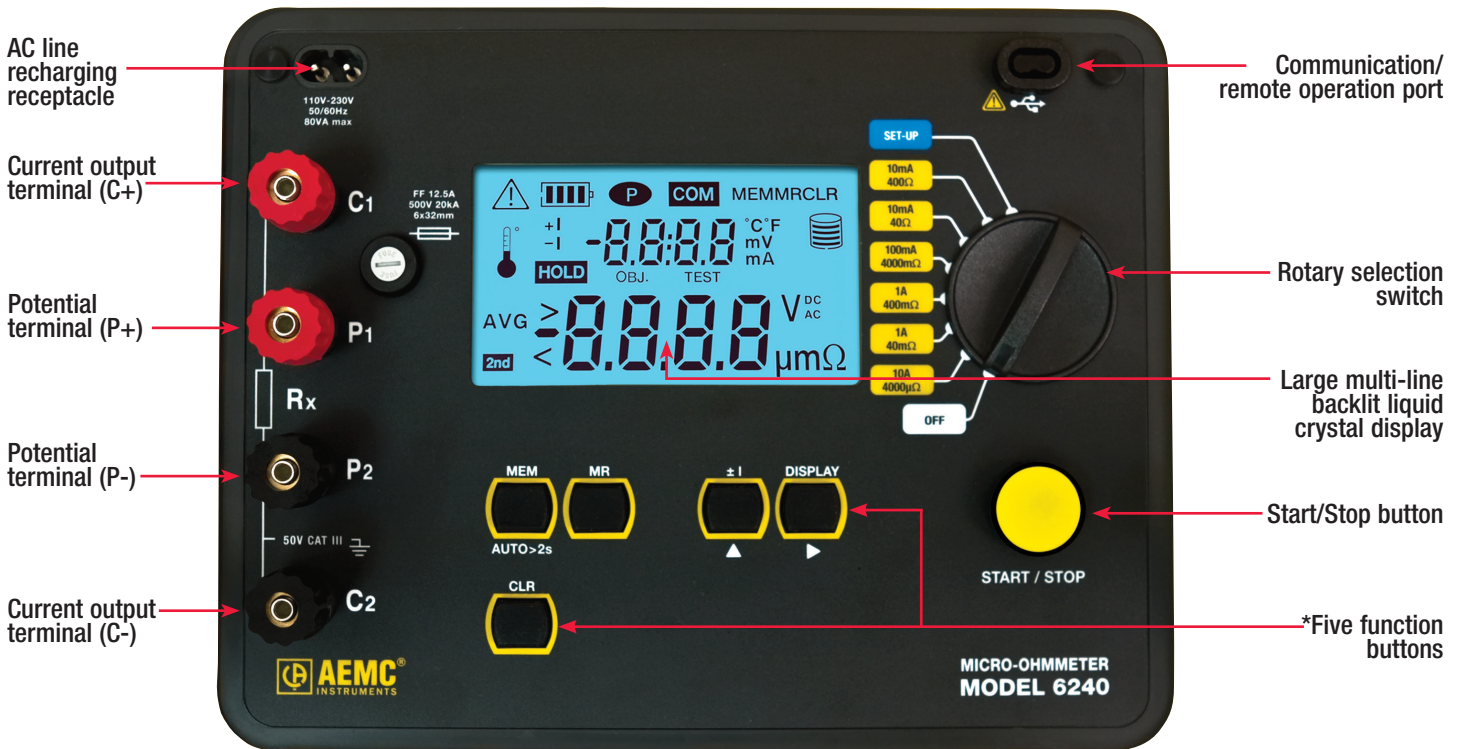
2118.79 (10ft)
2118.80 (20ft)



2129.95
2129.96 (w/ cable)

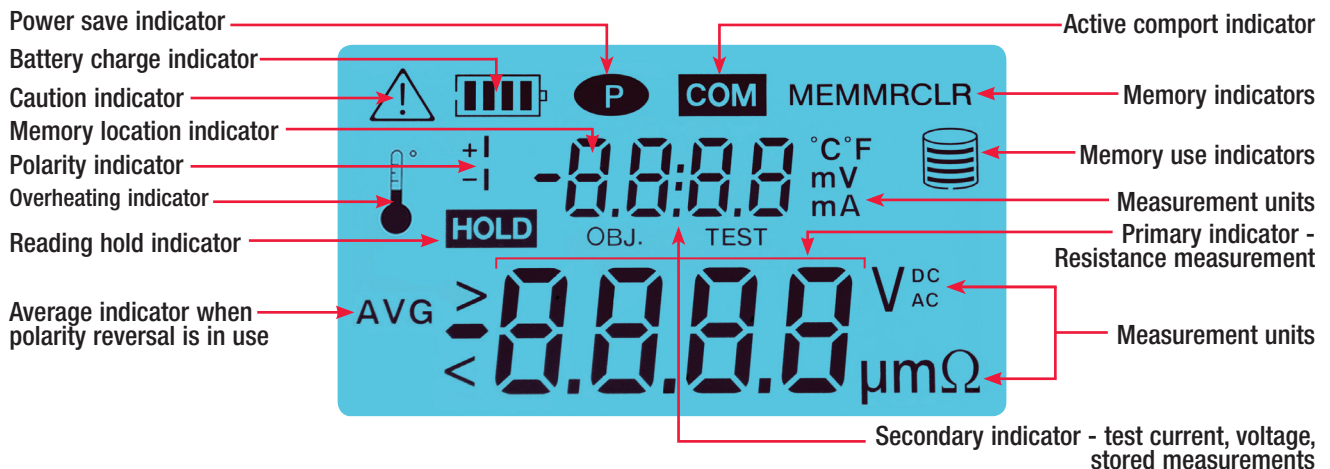
Model 6240

Construction



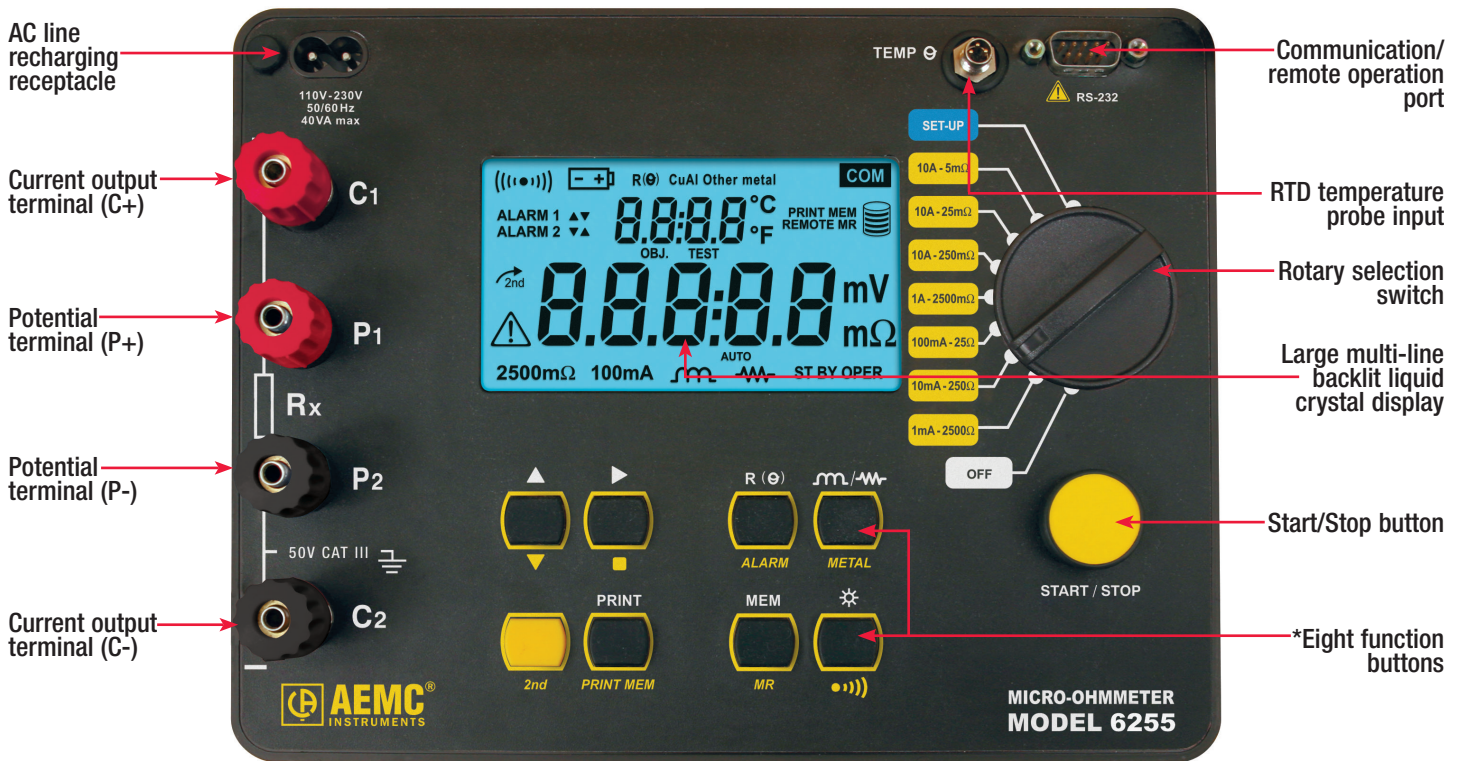
* Function buttons allow direct access to data storage and retrieval, polarity reversal, auto/manual measurement and displayed values.

Functional Display



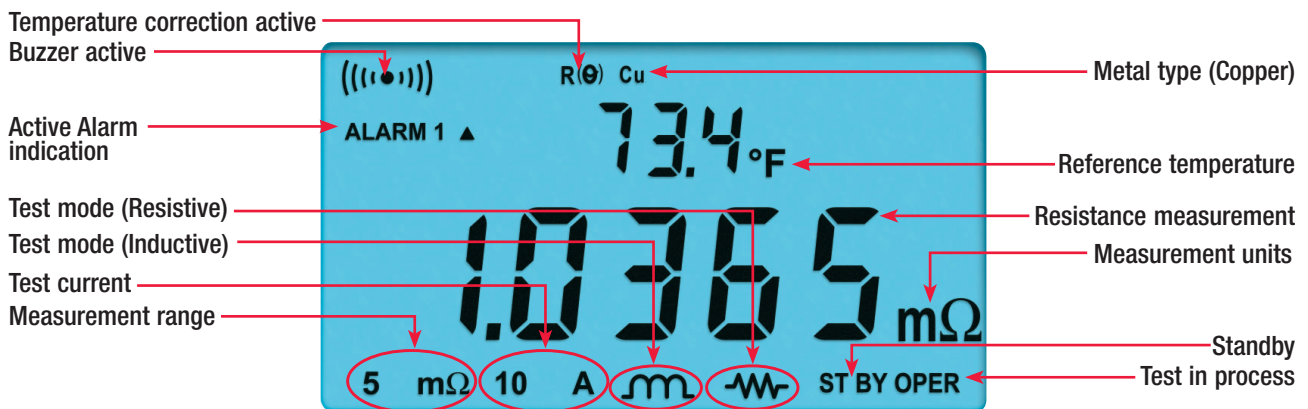
Model 6255

Construction



* Function buttons allow direct access to data storage and retrieval, polarity reversal, auto/manual measurement and displayed values.

Functional Display



MODEL 6292



Product 2129.83 Includes

- Accessory Bag
- 2 25ft Kelvin Test Leads w/ Hippo Clamp (200A)
- 1 Green Ground Lead w/ Clamp
- USB Cable
- Power Cord
- User manual
- DataView® software

Accessories/Replacement Parts

- 2129.72 Lead - Set of 2 25ft Kelvin Leads with Hippo Clamp (200A)
- 2129.73 Lead - Set of 2 50ft Kelvin Leads with Hippo Clamp (200A)
- 2129.86 Current Probe Model MR6292
- 2129.88 Lead - 10ft Earth/Ground w/ attached Clamp
- 5000.40 110V US Power Cord

FEATURES

- ▶ Advanced cooling system allows continuous testing at 100A or below and up to 120 seconds at 200A
- ▶ Allows multiple sequential tests
- ▶ Programmable test currents from 5 to 200A
- ▶ Measures single or both sides grounded systems
- ▶ Direct viewing of stored tests on the display
- ▶ Accurately measures low contact resistances from 0.1 $\mu\Omega$ to 1 Ω
- ▶ Resolution of 0.1 $\mu\Omega$
- ▶ Large LCD digital display, available in four languages
- ▶ Stores up to 8000 test results
- ▶ USB communication interface
- ▶ Direct printout using DataView® software and a PC
- ▶ Rugged, light-weight and water-resistant case

APPLICATIONS

- ▶ Test switchgear contact resistance
- ▶ Test circuit breaker contact resistance
- ▶ Test air frame bonding
- ▶ Test rail bonding
- ▶ Test pipeline bonding
- ▶ Test large transformers



SPECIFICATIONS

ELECTRICAL	
Test Current Range	Programmable from 5 to 200A (True DC)
Resistance Range	0.1 $\mu\Omega$ to 2m Ω ; 2 to 200m Ω ; 200m Ω to 1 Ω
Accuracy	\pm 1% of reading from 50 $\mu\Omega$ to 1 Ω
Resolution	0.1 $\mu\Omega$ (200A max) 10 $\mu\Omega$ (25A max at 200m Ω) 1m Ω (5A max at 1 Ω)
Output Voltage	100V _{AC} : 4.2V @ 200A 220V _{AC} : 8.6V @ 200A
Max. Load Resistance	100V _{AC} : 20m Ω @ 200A 220V _{AC} : 42m Ω @ 200A
Measurement Method	Four-terminal, Kelvin-type
Test Mode	Normal or both sides grounded (BSG)*
Adjustable Test Time	5 to 120 seconds at 200A, unlimited at 100A or below
Memory	Stores up to 8000 measurements
Communication Software	DataView® software
Power Supply	100 to 240V _{AC} , 50/60Hz
MECHANICAL	
Dimensions	19.8 x 15.5 x 7.5" (502 x 394 x 190mm)
Weight	24.25 lbs (11kg) approx
DISPLAY	
Display Type	4 line x 20 characters per line LCD
Size	4.75 x 2.75" (121 x 70mm)
Backlight	adjustable
COMMUNICATION	
Interface port	USB 2.0
ENVIRONMENTAL	
Operating Temperature	32° to 122°F (0° to 50°C)
Storage Temperature	14° to 158°F (-10° to 70°C)
Humidity	95% RH (non-condensing)
SAFETY	
Safety Rating	IEC61010-1
Protection	Protections against over current, short circuit, overheating and over voltage at output terminals
Environmental Protection	IP54 with closed lid
Test w/ Both Sides Grounded	Yes
CE Mark	Yes

*BSG Test Mode requires optional Current Probe Model MR6292 (Cat. #2129.86)



2129.86



2129.72 (25ft)
2129.73 (50ft)



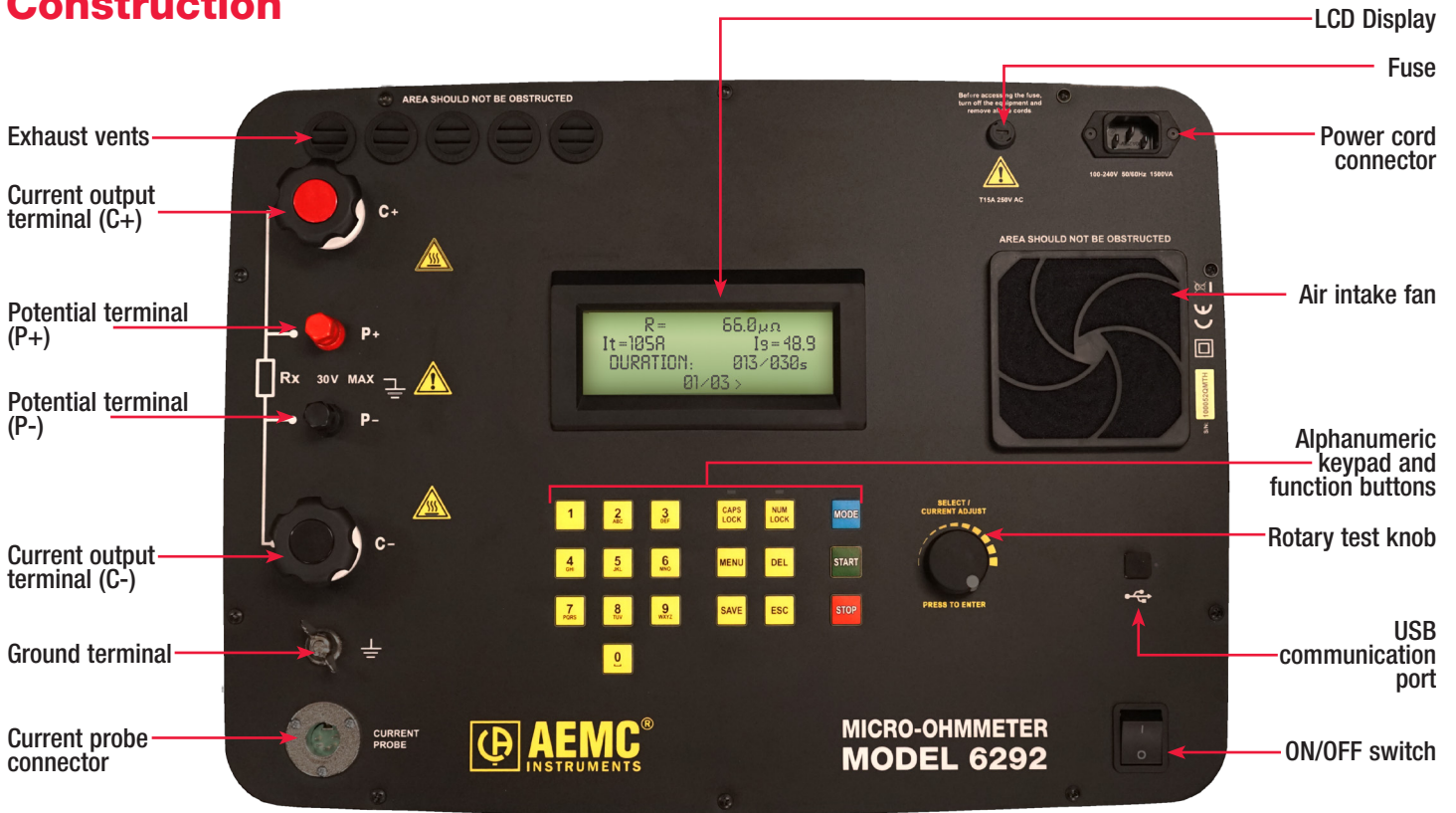
2129.88



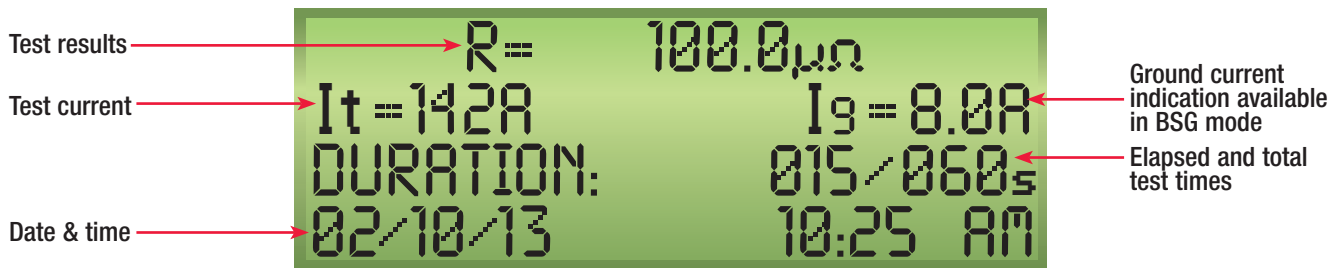
5000.40

Model 6292

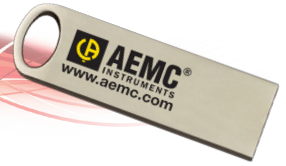
Construction



Functional Display

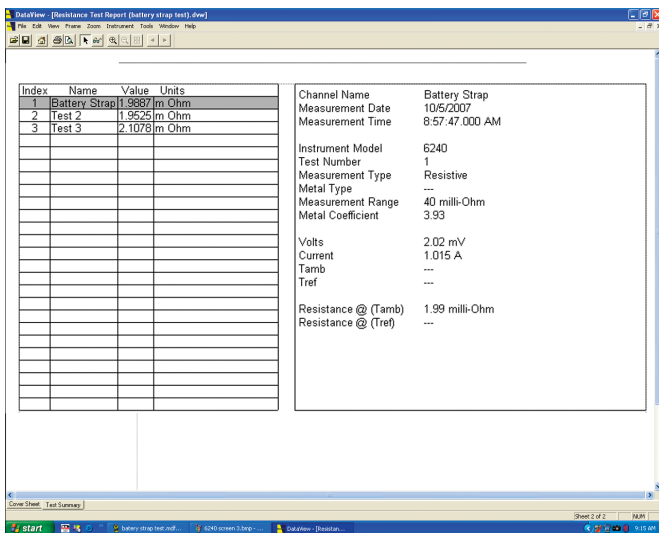
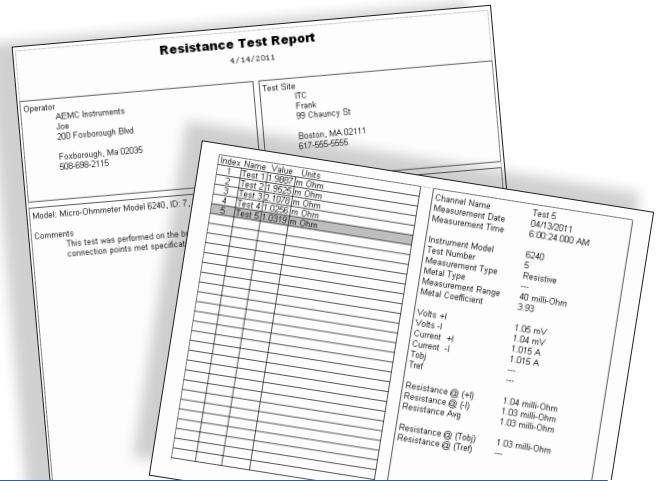


DataView[®]

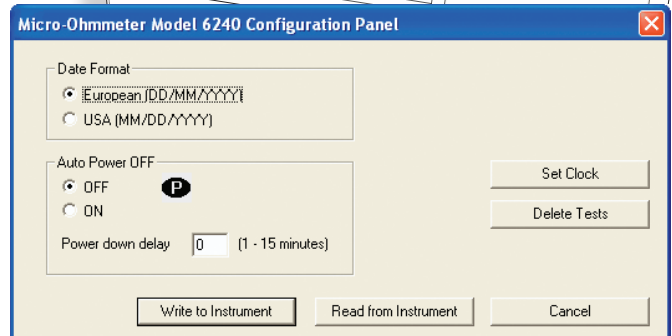


FEATURES

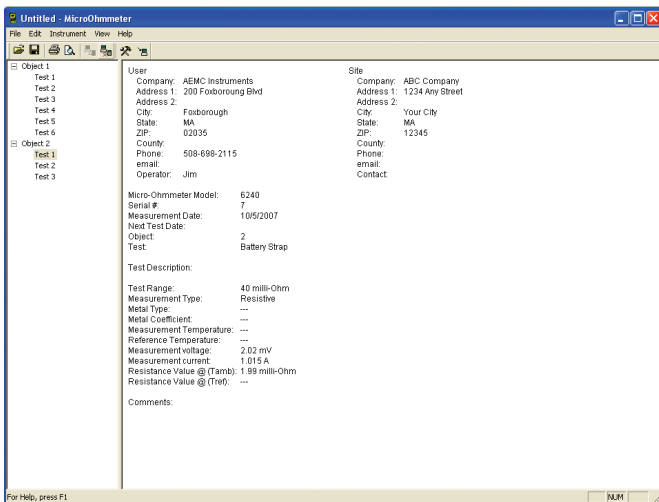
- ▶ Configure instrument from your PC
- ▶ Customize views and templates to your exact needs
- ▶ Create and store a library of configurations that can be used with the Models 6240, 6255, and 6292 as needed
- ▶ Display test results
- ▶ Print reports using standard included templates or custom templates you design
- ▶ Upload stored test results to your PC



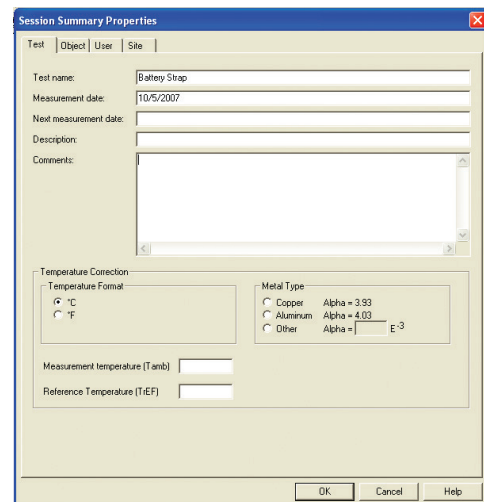
Statistical presentation of measurements



All set up functions available from one screen



Clean, easy-to-read report of test results



Easily documents statistics about user and test site to be stored with the data

United States & Canada

Chauvin Arnoux®, Inc.
d.b.a. AEMC® Instruments
200 Foxborough Blvd.
Foxborough, MA 02035 USA
(508) 698-2115 • Fax (508) 698-2118

Customer Support
for placing an order,
obtaining price & delivery
(800) 343-1391
customerservice@aemc.com

Sales & Marketing Department
for general sales and marketing
information
sales@aemc.com
marketing@aemc.com

Repair & Calibration Service
for information on repair & calibration
repair@aemc.com

United States & Canada (continued)

**Technical & Product
Application Support**
for technical and application support
(800) 343-1391
techinfo@aemc.com

Webmaster
for information regarding our website
www.aemc.com
webmaster@aemc.com

South America, Central America, Mexico & the Caribbean

Chauvin Arnoux®, Inc.
d.b.a. AEMC® Instruments
15 Faraday Drive
Dover, NH 03820 USA
export@aemc.com

Australia & New Zealand

Chauvin Arnoux®, Inc.
d.b.a. AEMC® Instruments
15 Faraday Drive
Dover, NH 03820 USA
export@aemc.com

All other countries

Chauvin Arnoux® SCA
190, rue Championnet
75876 Paris Cedex 18, France
Tel 33 1 44 85 45 28
Fax 33 1 46 27 73 89
info@chauvin-arnoux.com
www.chauvin-arnoux.com



AEMC ONE SOURCE®
For All Your Electrical Test & Measurement Instruments

Visit our website at www.aemc.com

Call the AEMC® Instruments Technical Assistance Hotline for immediate consultation with an applications engineer: (800) 343-1391
Chauvin Arnoux®, Inc. d.b.a. AEMC® Instruments • 200 Foxborough Blvd. • Foxborough, MA 02035 USA • (800) 343-1391 • (508) 698-2115 • Fax (508) 698-2118
Export Department: (603) 749-6434 (x520) • Fax (603) 742-2346 • E-mail: export@aemc.com